

V-Tag Tracker User Guide

Table of Contents

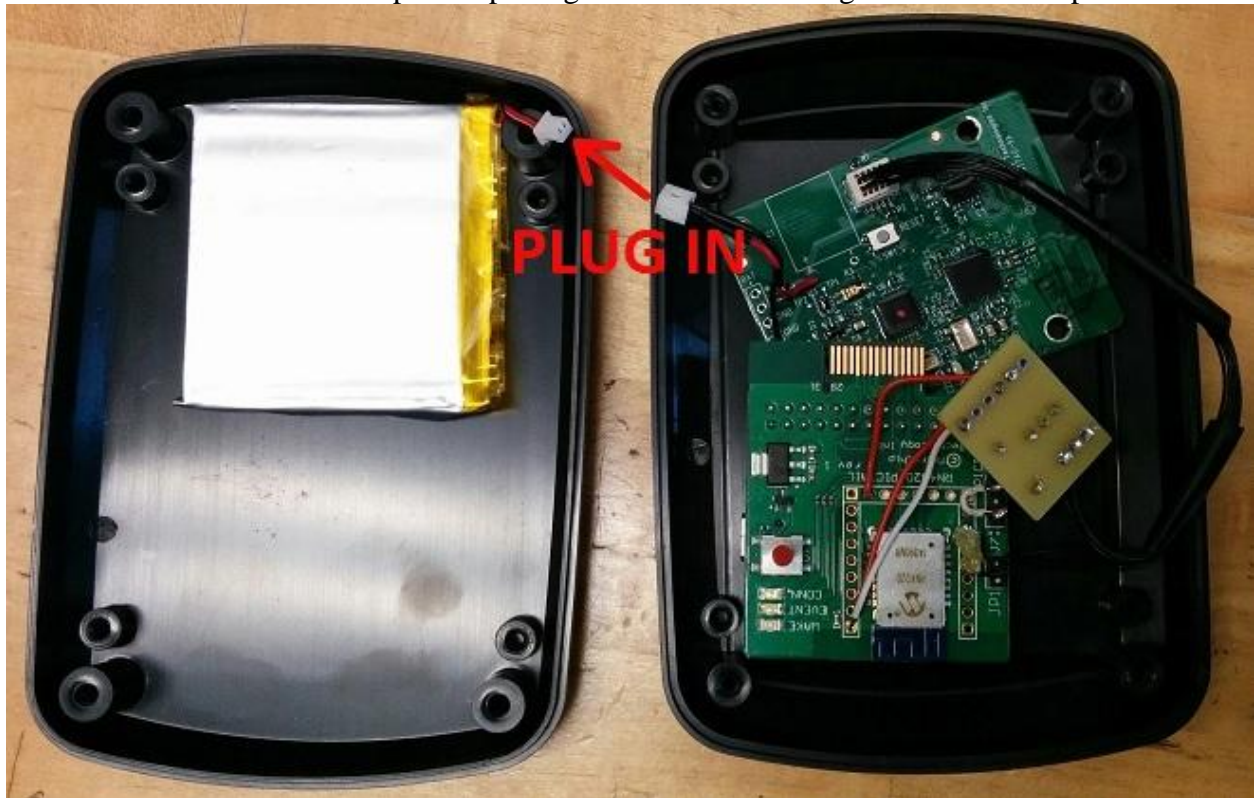
Setup Overview	2
V-Tag Finder Setup Steps	2
Android Setup Steps	3
Activating the V-Tag	4
Using the V-Tag Tracker	5
Browse V-Tag Finders	5
Finder Details	6
Troubleshooting	7

Setup Overview

The V-Tag Tracker consists of an Android or iOS mobile application used in conjunction with a Finder Unit to let a user narrow in on exactly where an Asset is, down to the last inch.

V-Tag Finder Setup Steps

Setting up the finder unit can be accomplished simply by plugging in the battery. Remove the 4 screws in the finder unit and open it up. Plug the Molex cables together and close up the unit.



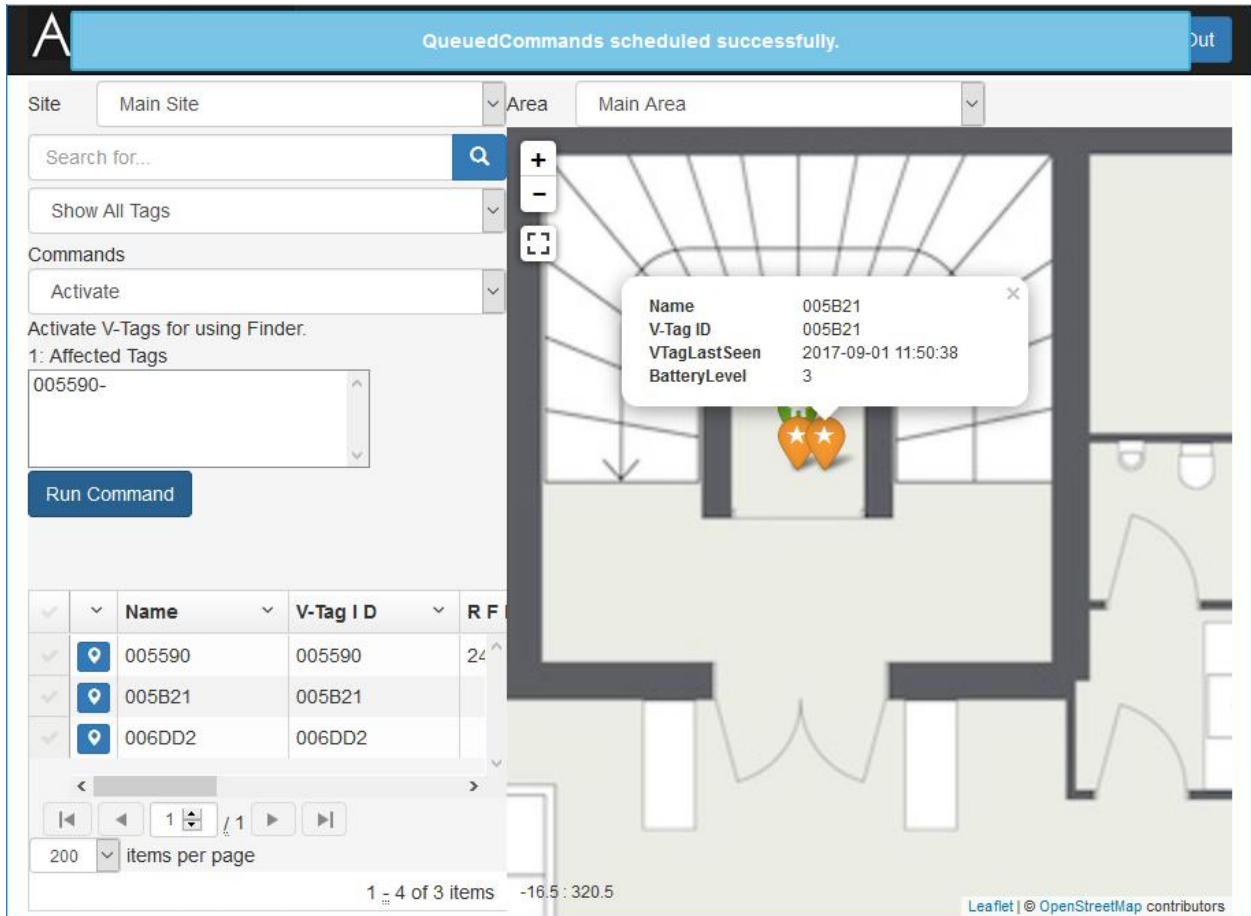
Android Setup Steps

The V-Tag Tracker program can be found on the Google Play store. It requires Android version 4.3 or later. The Android device must also support Bluetooth Low Energy (LE).

1. Launch the Google Play store and do a search for “VTag”. Click and install the V-Tracker program.
2. Ensure that Bluetooth is enabled on your Android device.
3. Launch the V-Tag Application.

Activating the V-Tag

Log into AssetWorx and go to the V-Tag Command Center. Select the Asset that you wish to locate. Select the Activate command and click the Run Command. This will then activate the V-Tag which will allow it to show up on the handheld:



The screenshot displays the AssetWorx V-Tag Command Center interface. At the top, a blue notification bar states "QueuedCommands scheduled successfully." with a "Out" button. The interface includes dropdown menus for "Site" (Main Site) and "Area" (Main Area), a search bar, and a "Show All Tags" button. The "Commands" section shows "Activate" selected, with instructions to "Activate V-Tags for using Finder." and a list of "Affected Tags" including "005590-". A "Run Command" button is present. Below this is a table of V-Tags:

Name	V-Tag ID	R F
005590	005590	24
005B21	005B21	
006DD2	006DD2	

The right side of the interface shows a map with a floor plan. A tooltip for the selected V-Tag (005B21) displays the following information:

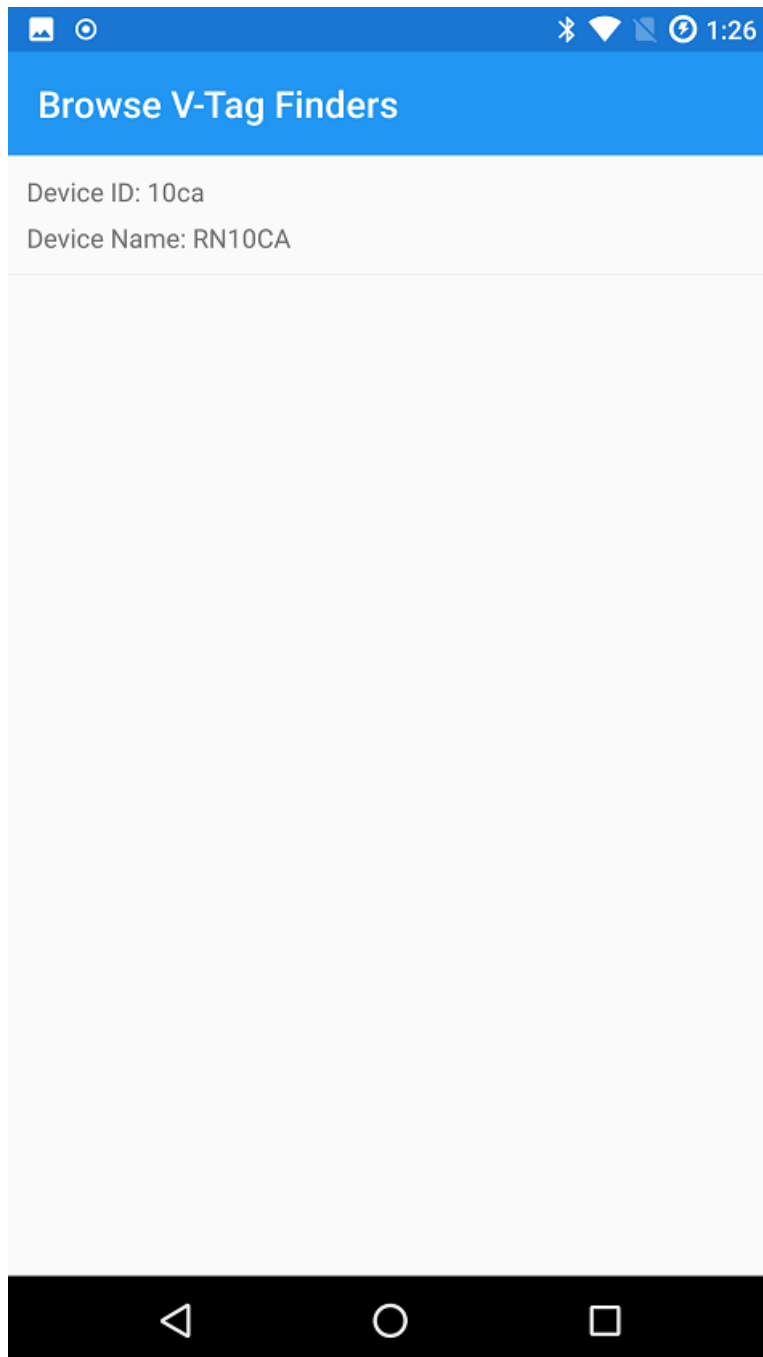
- Name: 005B21
- V-Tag ID: 005B21
- VTagLastSeen: 2017-09-01 11:50:38
- BatteryLevel: 3

The map also shows a "Leaflet | © OpenStreetMap contributors" footer.

Using the V-Tag Tracker

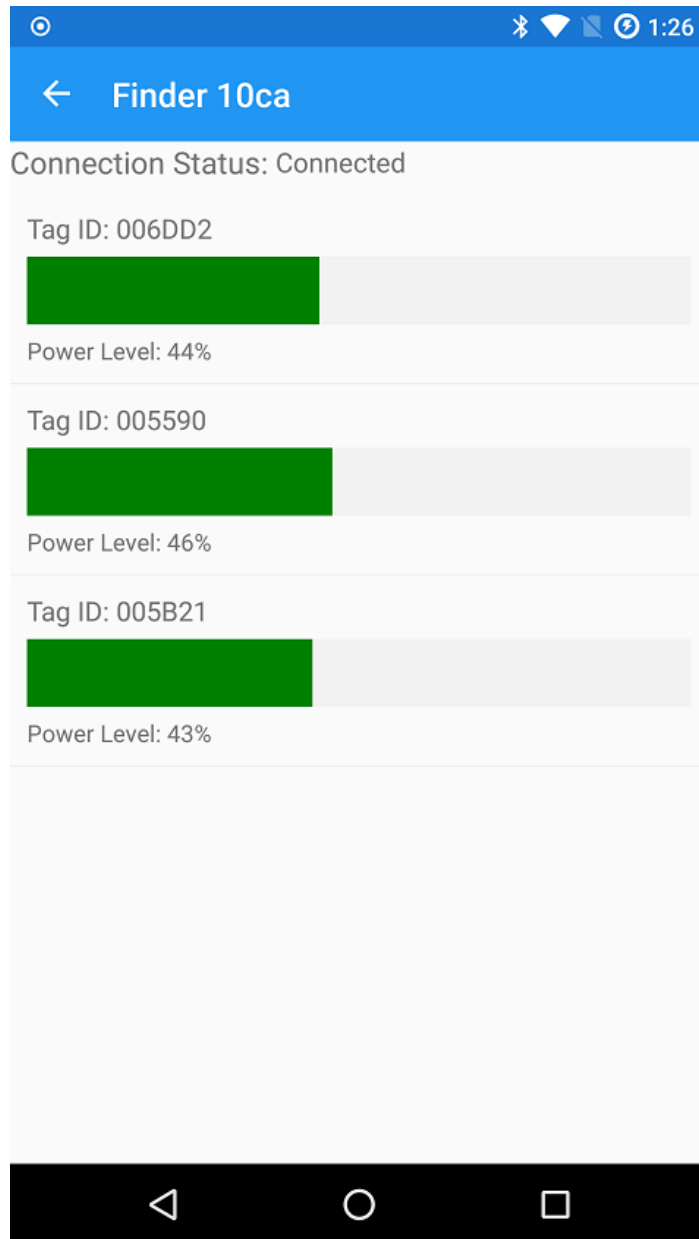
Browse V-Tag Finders

The first screen will ask you to choose which Finder Unit you want to connect to. If no Finder Unit shows up, first make sure that the battery has been attached.



Finder Details

Once connected, the Activated V-Tag will show up on the Finder Details screen. As the finder unit gets closer to the V-Tag the green bars power level will get higher and higher. A reading of 95-100 means that you are within 3 feet of the V-Tag. When using the Tracker software, try holding the Finder unit close to your body which will help to identify the direction of the V-Tag that you are tracking.



Troubleshooting

If the Finder unit doesn't show up in the V-Tag Tracker list, first make sure it is on. The Wake light should be a solid blue. If the wake light is on but you still can't see it, see if the Conn light is a solid green. If it is a solid green, that means that another unit is connected to the device, which would make it so that it no longer advertises itself. If all else fails, try pressing the Reset button on the Finder unit which will reprogram the Bluetooth module. After about 30 seconds, the Finder unit should show up in the V-Tag Tracker program.

